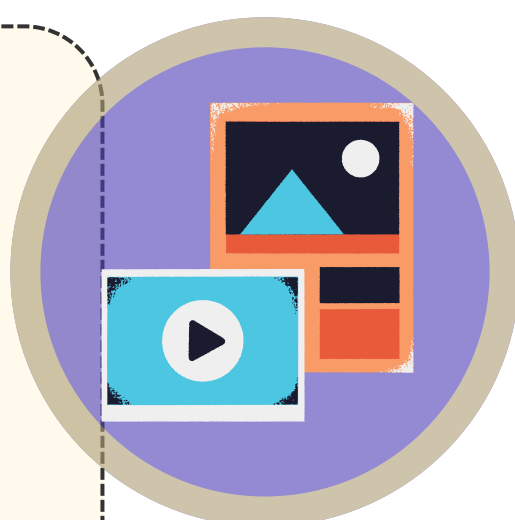


NEP-2020 emphasizes formative and competency-based assessment for developing higher-order thinking skills such as creativity, critical thinking and analysis. The assessments help the learner to track and improve the learning outcomes and promote holistic development.

ePortfolio

- Portfolio is a **comprehensive assessment tool** which includes specimens of the work done by the learner during the study period.
- With these selected artifacts it also includes **learner reflections** on learning and mastering skills.



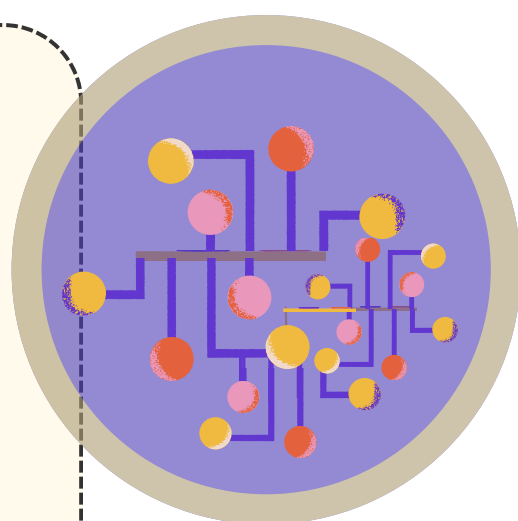
Rubric

- It is a tool for grading assignments, portfolio, presentations etc.
- It is a **two-dimensional tool** with **assessment Criteria** and **Continuum of grading** as two dimensions.
- Students understand expectations from the assignment whereas the teacher is aware about the components to be graded.



Concept Maps and Mind Maps

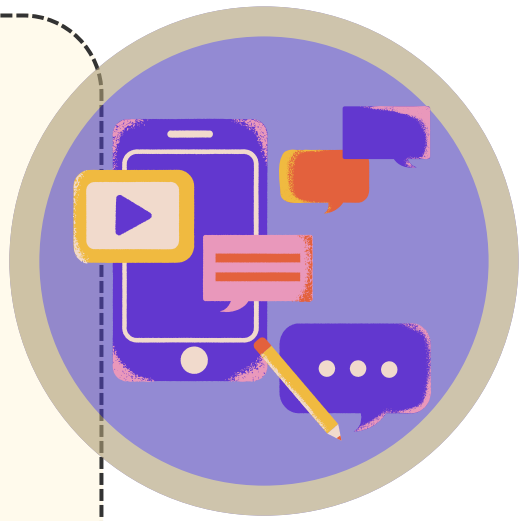
- Concept Maps allow to **test student's comprehension** of abstract, complex concepts, and connects many ideas or concepts.
- Mind Maps provide visual representation of the central idea and depicts its creator's view as well as **application of knowledge**.



NEP-2020 emphasizes formative and competency-based assessment for developing higher-order thinking skills such as creativity, critical thinking and analysis. The assessments help the learner to track and improve the learning outcomes and promote holistic development.

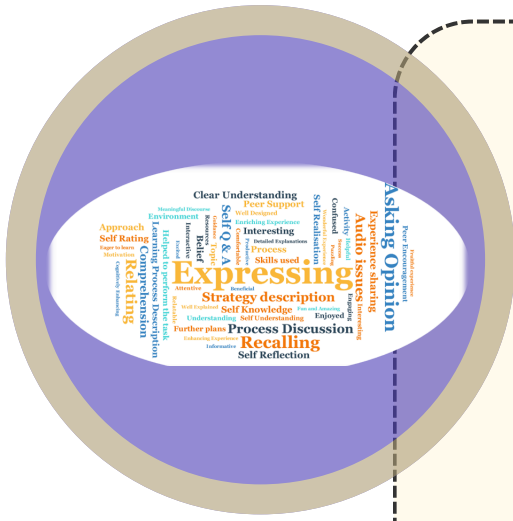
Discussion Forum and Blog posts

- It allows to **exchange ideas**, share experiences and **reflect by posting** comments.
- Teachers can identify flows in conceptual understanding and give **constructive feedback**.



WordCloud

- It is a visual representation of information to gauge the use of **specific key words**.
- It promotes student **engagement**, boost individual **participation** and **increases motivation**.
- It provides opportunity for the students to **observe and assess visually** what they as a group have learned or think about a topic.



Quizzes

- It is a **simple and effective** way of incorporating formative assessment.
- A tool for assessing students **knowledge and skills**.
- It can be used to provide **feedback** for improving knowledge

